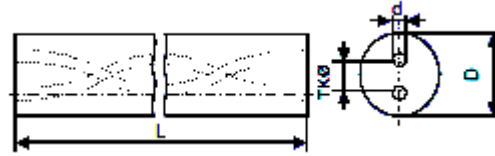




双螺旋孔圆棒



直径 D (mm)	长度 L(mm)	孔距 TK (mm)	孔径 d(mm)	角度	螺距(mm)	EMT100
3.30 +0.50	330 ±5.0	1.50	0.40	30°	16.32	●
4.25 +0.50	330 ±5.0	2.10	0.50	30°	21.77	●
5.25 +0.50	330 ±5.0	2.60	0.70	30°	27.21	●
6.30 +0.50	330 ±5.0	1.60	0.50	40°	18.00	●
6.30 +0.50	330 ±5.0	1.60	0.50	40°	22.46	●
6.30 +0.50	330 ±5.0	1.90	0.60	30°	32.65	●
6.30 +0.50	330 ±5.0	2.00	0.50	40°	22.46	●
6.30 +0.50	330 ±5.0	2.10	0.60	40°	22.46	●
6.30 +0.50	330 ±5.0	2.20	0.80	30°	32.65	●
6.30 +0.50	330 ±5.0	2.50	0.70	15°	70.35	●
6.30 +0.50	330 ±5.0	2.60	0.70	30°	32.65	●
6.80 +0.50	330 ±5.0	2.20	0.50	40°	24.34	●
6.80 +0.50	330 ±5.0	3.50	1.00	30°	35.37	●
7.30 +0.50	330 ±5.0	2.40	0.65	40°	26.21	●
8.30 +0.60	330 ±5.0	2.70	0.65	40°	29.95	●
8.30 +0.60	330 ±5.0	3.50	0.90	40°	35.00	●
8.30 +0.60	330 ±5.0	3.50	1.30	15°	93.80	●
8.30 +0.60	330 ±5.0	4.00	1.00	30°	43.53	●
9.30 +0.70	330 ±5.0	3.20	0.75	40°	33.70	●
10.30 +0.70	330 ±5.0	2.70	0.80	40°	37.44	●
10.30 +0.70	330 ±5.0	3.50	0.80	40°	37.44	●
10.30 +0.70	330 ±5.0	4.50	1.10	40°	46.00	●
10.30 +0.70	330 ±5.0	4.80	1.40	30°	54.41	●
10.30 +0.70	330 ±5.0	5.00	1.50	15°	117.25	●
12.30 +0.70	330 ±5.0	4.20	0.90	40°	44.93	●
12.30 +0.70	330 ±5.0	5.40	1.50	30°	65.30	●
12.30 +0.70	330 ±5.0	5.70	1.40	40°	57.00	●
12.30 +0.70	330 ±5.0	5.90	1.70	30°	65.30	●
12.30 +0.70	330 ±5.0	6.20	1.60	15°	140.70	●
13.30 +0.70	330 ±5.0	4.40	0.90	40°	48.67	●
13.30 +0.70	330 ±5.0	6.50	1.75	30°	70.74	●
14.30 +0.70	330 ±5.0	4.70	1.00	40°	52.42	●
14.30 +0.70	330 ±5.0	7.00	2.00	15°	164.14	●
14.30 +0.70	330 ±5.0	7.10	1.75	30°	76.18	●
14.30 +0.70	330 ±5.0	7.10	2.00	30°	76.18	●



15.30	+0.70	330	±5.0	5.10	1.10	40°	56.16	●
15.30	+0.70	330	±5.0	7.70	1.75	30°	81.62	●
16.30	+0.70	330	±5.0	5.50	1.20	40°	59.90	●
16.30	+0.70	330	±5.0	8.00	2.00	15°	187.59	●
16.30	+0.70	330	±5.0	8.30	1.75	30°	87.06	●
16.30	+0.70	330	±5.0	8.60	2.50	30°	87.06	●
18.30	+0.70	330	±5.0	6.30	1.50	40°	67.39	●
18.30	+0.70	330	±5.0	9.00	2.20	15°	211.04	●
18.30	+0.70	330	±5.0	9.50	2.00	30°	97.95	●
18.30	+0.70	330	±5.0	9.70	2.80	30°	97.95	●
19.30	+0.70	330	±5.0	10.10	2.50	30°	103.39	●
20.30	+0.70	330	±5.0	7.10	1.50	40°	74.88	●
20.30	+0.70	330	±5.0	10.00	2.50	15°	234.49	●
20.30	+0.70	330	±5.0	10.40	2.80	30°	108.83	●
20.30	+0.70	330	±5.0	10.70	3.20	30°	108.83	●