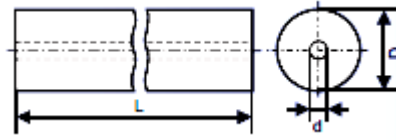




单直孔硬质合金圆棒/管材



D(mm)	Tol	L(mm)	Tol	d(mm)	EMT100	EMT210	EMT512
4.25	-0.05/+0.15	330	+5.0	0.40	○		
4.25	-0.05/+0.15	330	+5.0	0.60	○	○	
4.25	-0.05/+0.15	330	+5.0	0.80		○	
4.25	-0.05/+0.15	330	+5.0	1.00	○	○	
4.25	-0.05/+0.15	330	+5.0	1.40		○	
4.25	-0.05/+0.15	330	+5.0	1.80		○	
5.25	-0.05/+0.15	330	+5.0	0.50			●
5.25	-0.05/+0.15	330	+5.0	1.00	●		
5.25	-0.05/+0.15	330	+5.0	2.00		○	
6.30	-0.05/+0.20	330	+5.0	0.50			●
6.30	-0.05/+0.20	330	+5.0	0.60		○	
6.30	-0.05/+0.20	330	+5.0	1.00	●	●	
6.30	-0.05/+0.20	330	+5.0	1.50	●	●	
6.30	-0.05/+0.20	330	+5.0	2.00		●	
8.30	-0.05/+0.20	330	+5.0	0.50			●
8.30	-0.05/+0.20	330	+5.0	0.80		●	
8.30	-0.05/+0.20	330	+5.0	1.00	○		○
8.30	-0.05/+0.20	330	+5.0	1.50	●	●	
8.30	-0.05/+0.20	330	+5.0	2.00	●	○	
10.30	-0.05/+0.20	330	+5.0	0.50			●
10.30	-0.05/+0.20	330	+5.0	1.00	○	○	○
10.30	-0.05/+0.20	330	+5.0	1.50	●	●	
10.30	-0.05/+0.20	330	+5.0	2.00	●	○	
10.80	-0.05/+0.25	330	+5.0	1.50	○		
12.30	-0.05/+0.25	330	+5.0	1.50	○		
12.30	-0.05/+0.25	330	+5.0	2.00	●	●	●
12.30	-0.05/+0.25	330	+5.0	2.50	○	○	
12.30	-0.05/+0.25	330	+5.0	3.00		○	
13.30	-0.05/+0.25	330	+5.0	0.50			○
13.30	-0.05/+0.25	330	+5.0	2.50	○	○	
14.30	-0.05/+0.25	330	+5.0	2.00		●	○
14.30	-0.05/+0.25	330	+5.0	2.50	●	●	
16.30	-0.05/+0.30	330	+5.0	2.00	○	●	●
16.30	-0.05/+0.30	330	+5.0	3.00		●	
18.30	-0.05/+0.30	330	+5.0	2.00		●	○
18.30	-0.05/+0.30	330	+5.0	3.00	●	○	



20.30	-0.05/+0.30	330	+5.0	2.00	●	●	●
20.30	-0.05/+0.30	330	+5.0	3.50	○	●	
22.30	-0.05/+0.40	330	+5.0	2.00			○
22.30	-0.05/+0.40	330	+5.0	3.50		●	
25.30	-0.05/+0.40	330	+5.0	3.00		○	●
25.30	-0.05/+0.40	330	+5.0	5.00	●	●	
28.30	-0.05/+0.50	330	+5.0	5.00	○		
30.30	-0.05/+0.50	330	+5.0	3.00			●
30.30	-0.05/+0.50	330	+5.0	5.00	○	○	
32.60	-0.10/+0.60	330	+5.0	5.00		●	